

Integrated Coaching Management System (ICMS)

1. Punctuality Analysis and Monitoring (**PAM**)
2. Coaching Operations Information System (**COIS**)
3. Coach Maintenance Management (**CMM**) – Pilot phase

Sanction year of Project (ICMS)	PAM, COIS & CMM 2003 - 04
Target / Actual date of completion for PAM	31 st Dec 2003 / 31 st Dec 2003
Target / Actual date of completion for Revised and Improved Version of PAM	31 st Mar 2006 / 31 st Mar 2006
Target / Actual date of completion for COIS	31 st Mar 2006 / 31 st Mar 2006
Target / Actual date of Pilot closure for CMM Pilot Phase	31 st Dec 2010 / Application made go live on all three Depots, LKO, NDLS, BCT.

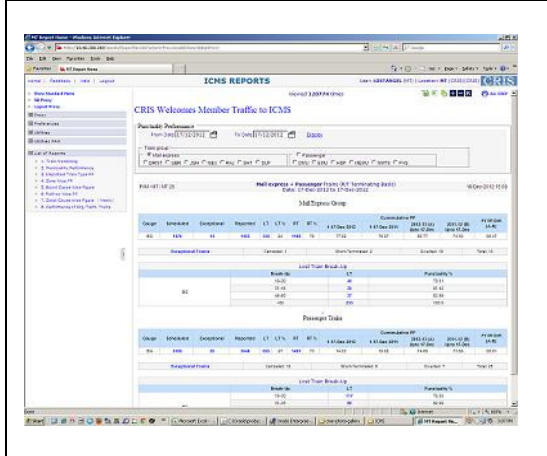
Location Coverage of ICMS (COIS, PAM implemented in all mentioned locations).	1. Railway Board
	2. All Zonal Railway HQ and Divisional HQ
	3. All Yards
	4. All Coaching Depots
	5. All Originating and terminating stations

Assistance: Sanctions to be expedited		In Railway Board/ CAO/FOIS Since
Revenue (O&M) Budget from 2012-13	Rs. 5.18 Cr.	08.08.2013 (RB)
Revenue (O&M) Budget from 2013-14	Rs. 6.31 Cr.	04.01.2013 (CAO)
Detail Estimate of CMM Roll Out Phase-1	Rs. 68.10 Cr.	14.01.2010 (CAO)

Road Map	
CMM – Pilot Phase closure	Completion expected by 31 st December 2013
CMM – Roll Out Phase - I	Sanctioned Abstract Estimate of Rs. 52.07 Cr.
	Detailed Estimate of Rs. 68.10 Cr. is with NR finance since 14 th January 2010 for vetting.

Integrated Coaching Management System (ICMS)

Punctuality Analysis and Monitoring (PAM) – It provides all punctuality related reports and real time train running information.	Coaching Operation Information System (COIS) – It provides near real time coaching stock and passenger locomotives related information.
Named users: Div (550) , Zone (215)	Named Users: 915, Locations: 240
J2EE, Oracle/ In-house / Within Cost	J2EE, Oracle/ In-house / Within Cost



Coach Maintenance Management (CMM) Pilot phase – Presently under Pilot project and is aimed at computerization of complete Mechanical & Electrical maintenance activities of coaching depots and closely integrated with COIS.

Locations : NDLS,BCT,LKO

Java, Oracle, Maximo, Cognos, Portal

