

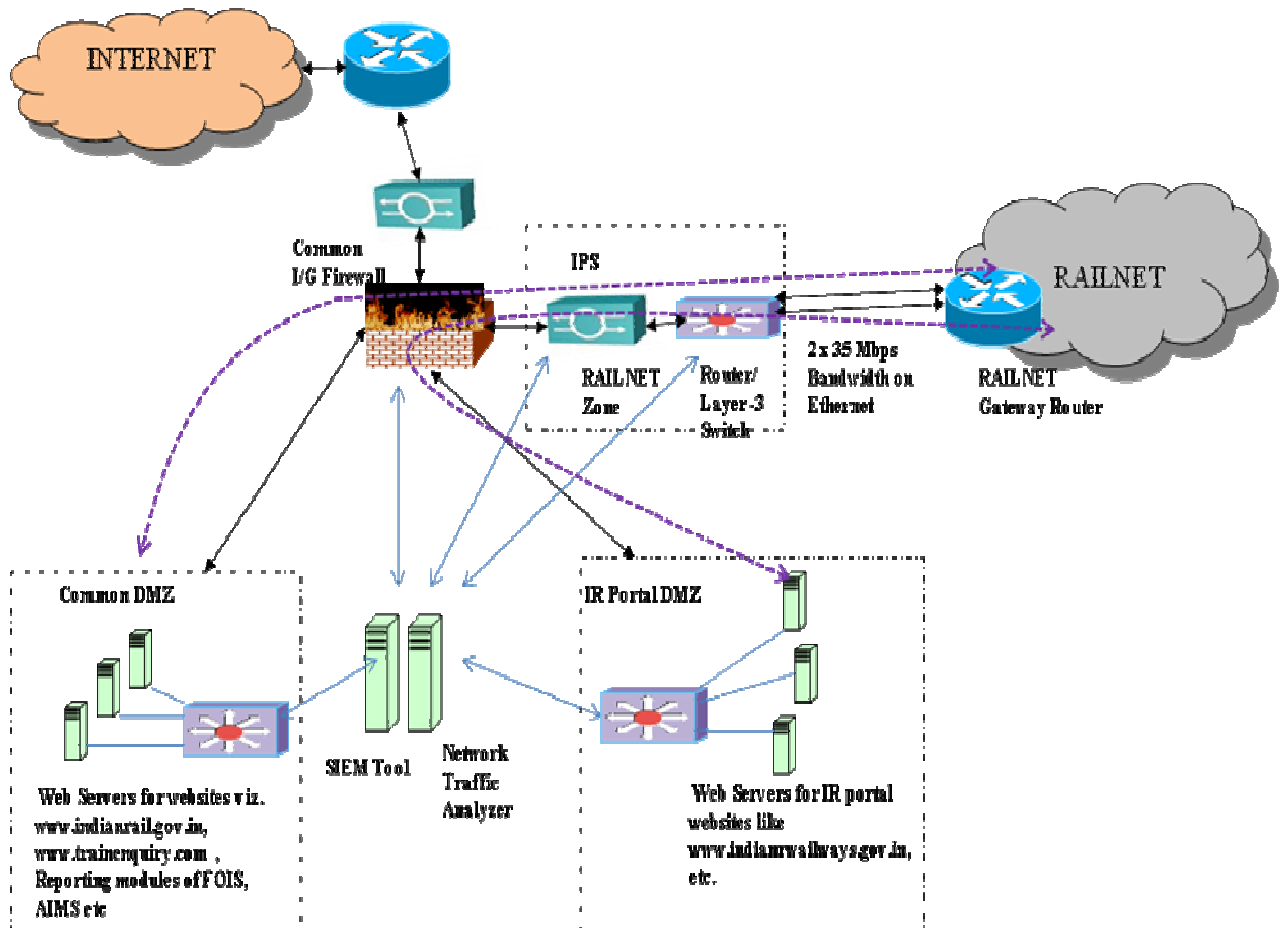
# Direct IP Peering between Railnet & RIDC at CRIS

## **Overview of Project:**

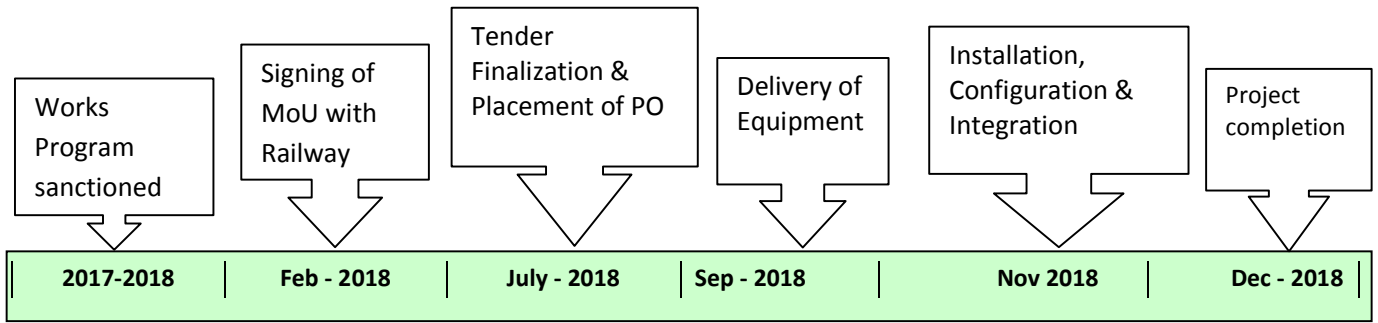
CRIS has hosted many critical railway applications/services like IR portal services, websites like [www.indianrail.gov.in](http://www.indianrail.gov.in), [www.indianrailways.gov.in](http://www.indianrailways.gov.in), [www.trainenquiry.com](http://www.trainenquiry.com), [www.ireps.gov.in](http://www.ireps.gov.in), [www.fois.indianrail.gov.in](http://www.fois.indianrail.gov.in) etc. and another set of internet facing applications include AIMS, reporting modules of FOIS, COIS etc in Central Datacenter at CRIS Chanakyapuri, New Delhi. Apart from these, various new critical applications namely Complaint Management Systems (CoMS), Safety Information Management systems (SIMS), Signalling Maintenance Management System (SMMS) is under implementation. It has been observed that large no. of users connected on Railnet requires access to applications/services hosted in Central DC at CRIS Chanakyapuri, New Delhi and at present, Railnet users access these services through Internet.

It is proposed to provide direct IP peering between Railnet and CRIS RIDC through which Railnet users shall be able to access applications/services hosted in CRIS RIDC directly without traversing Internet. This shall provide better end user experience to Railnet users for all the websites/applications/services hosted in RIDC at CRIS, Chanakyapuri New Delhi.

## **Architecture:**



### **Project Timelines:**



### **Project Status:**

Work sanctioned in WP 2017-18. Detail estimate sanctioned and MoU signed with Railway Board. Procurement of Network and security components for implementation of direct IP peering is under progress.